

GROUND FLOOR PLAN
SCALE 1:100

NOTES

INTERNAL WALLS -
SINCE INTERNAL WALLS ARE FACEBRICK, ALL WATER, ELECTRICAL AND GAS INSTALLATIONS TO BE DISCUSSED AND AGREED ON SITE PRIOR ERECTION OF WALLS STARTS. NO CHASING IS POSSIBLE AND NO SURFACE MOUNTED SERVICES IS ALLOWED.

FURNITURE -
FOR LOOSE AND FIXED FURNITURE REFER TO FURNITURE SCHEDULE AND JOINERY DRAWINGS.

SOLAR SHADING
VERTICAL OR HORIZONTAL SHADING DEVICES TO BE IMPLEMENTED TO EACH BLOCK INDIVIDUALLY AND AS NECESSARY TO FURTHER DETAILS.

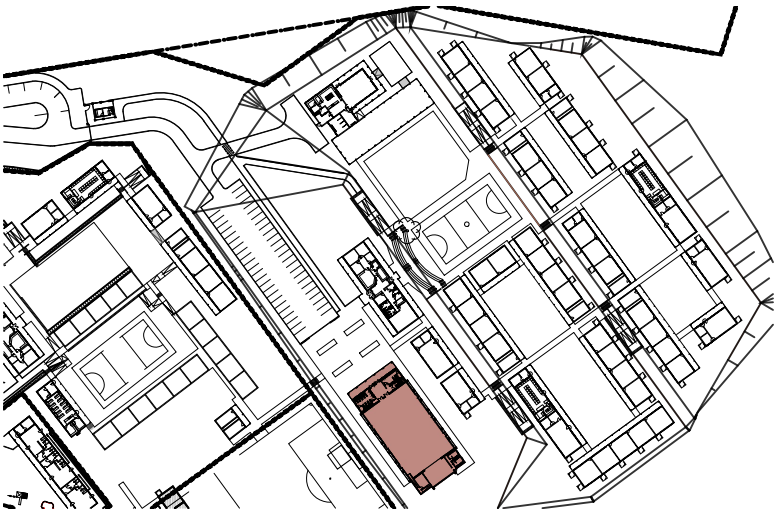
STORM WATER
POSITION OF TANKS AND CONCRETE RAINWATER CHANNEL TO SUIT SITE CONDITIONS AS PER SITE LAYOUTS TO ACCOMMODATE STORMWATER AND OVERFLOW, TO CIVIL ENG'S DESIGN AND DETAIL.

WINBLOCKS
REFER TO ELEVATIONS FOR POSITION OF WINBLOCKS

TRUSS
TRUSS MANUFACTURE TO SUBMIT A WORKSHOP DRAWING FOR APPROVAL

ISSUED FOR
APPROVAL

KEY



PSP

ARCHITECT



ARCHITECTURAL PROFESSIONAL SACAP NUMBERS:
H.L. MANTEL SACAP 3045

IMPLEMENTED BY

**INDEPENDENT
DEVELOPMENT
TRUST**

SIGNATURE	DATE	SHEET NO. A1
DESIGNED		SCALE 1:100
DRAWN		STATUS LEGEND
VERIFIED		I = INFORMATION
VALIDATED		FA = FOR APPROVAL
		T = TENDER
		C = CONSTRUCTION
		AB = AS BUILT

CLIENT



IMPLEMENTING
AGENT



PROJECT
**DOE PORTFOLIO PROGRAMME
ESTABLISHMENT OF NEW SCHOOLS
HILLBROW - SENIOR SECONDARY SCHOOL**
PROVINCE: EASTERN CAPE PROVINCE

DRAWING TITLE
**MULTI-PURPOSE HALL (BLOCK S-Y)
GROUND FLOOR PLAN**

DRAWING DESCRIPTION
--

NOTE
FOR JOINERY DETAILS REFER TO
DWG NO: 2204 w07_01-07/200

DISCIPLINE	DRAWING NUMBER	STATUS	REVISION
200500293	ARCH	2204 w03-07/201	FA AA